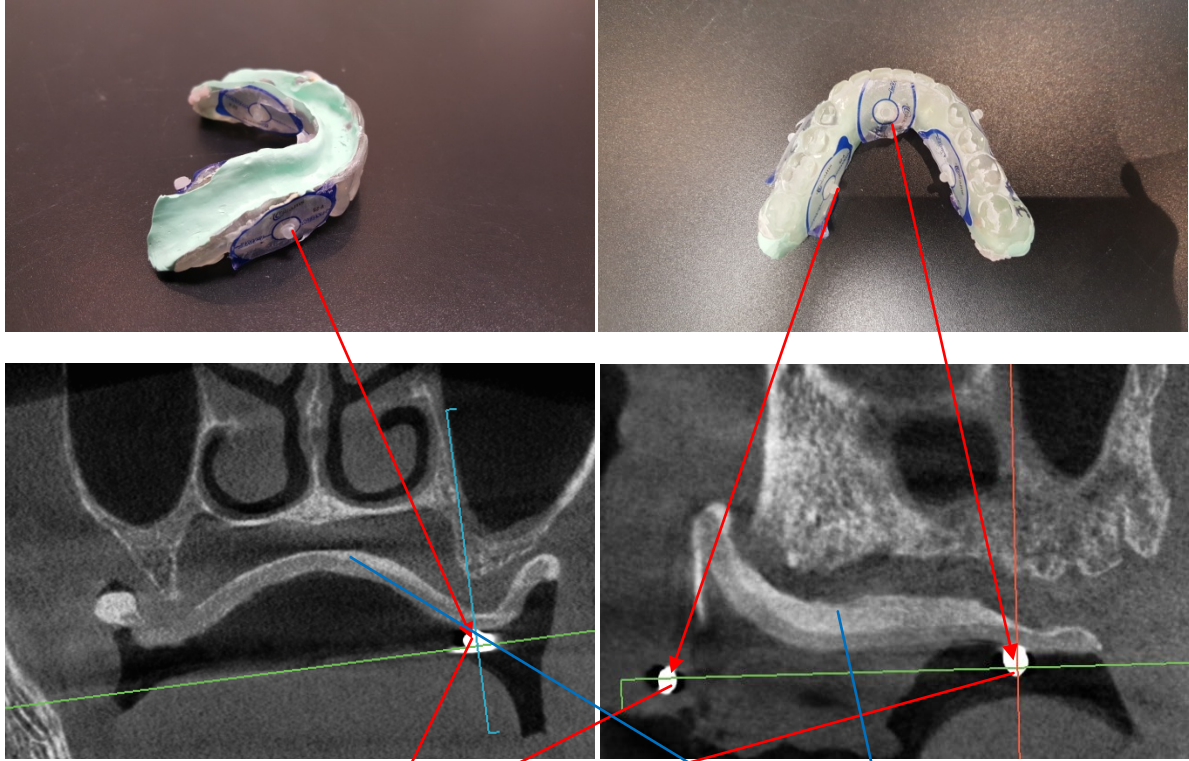


## MGUIDE Tips and Tricks: Edentulous Cases

- 1) A radio-opaque scanning appliance is required for an edentulous MGUIDE case. To create the scanning appliance, start by duplicating the patient's denture
  - a. Duplicate the current denture using a LANG denture duplicator or similar tools. See this links bellow on how to duplicate a denture: [https://youtu.be/wurvz\\_uG-s](https://youtu.be/wurvz_uG-s)  
<http://www.youtube.com/watch?v=sTJRqhhdg3U>
- 2) The duplicate denture must be made into a radio-opaque scanning appliance by either method below.
  - a. The duplicate denture can be made into a scanning appliance by the MCENTER and returned to you for the remaining steps
  - b. Attach radiopaque labels ([www.suremark.com](http://www.suremark.com) SL-25T Phone#: 1-800 406 3399) to the denture on the outside of the denture. The stickers must be exposed from any impression material after impressions are taken so choose an appropriate location for the stickers.
- 3) Use the radio-opaque scanning appliance to take the impression of the patient's gums (see pictures below) using Green Moose impression material and being careful not to over press the impression material. Green-Mousse ordering information - (PARKELL INC. Phone#: 1-800-243-7446 Stock No.S455S or from Darby Dental Supplies mfg#8750305)
- 4) Cut the excess Green Moose around the margins and place glass beads (Suremark V-25) making sure the beads will be visible from an occlusal view. Ensure Green Moose does not cover the beads (see picture below)
- 5) After placing the beads place the appliance back in the patient's mouth. Ensure that the scanning appliance fits well in the patient's mouth.
- 6) During the scan, the patient's tongue should be in a low and posterior position. The patient's mouth should be open. Cotton rolls or similar material should be placed to separate cheeks from the alveolar ridge. This is done so that the ridge can clearly be seen in contrast to the hollow mouth space.
- 7) Take the CT scan per the parameters in the MGUIDE CT Scan protocol on [www.MCENTERUSA.com](http://www.MCENTERUSA.com)
- 8) Do not pour the impression. Send the impression to the MCENTER for pouring and processing



**Radio-opaque glass beads  
Suremark V-25**

**Green Moose outline of the gums**

Upper Left and Upper Right: Impression taken with the denture replica and Green Moose. Scanning dots attached. Lower Left and Lower Right: Scanning dots (red arrows) and Green Moose (blue arrows) as seen on the CT scan



Left: Scanning dots by Suremark. Right: Green Moose by Parkell